

NATURE PARK LAKE STEINHÜDER MEER

Schaumburger Land and Mittelweser

CREATING SPECIAL MEMORIES!

Between the rivers Weser, Leine and the Schaumburger Land with Nature Park Lake Steinhuder Meer in the center, there is plenty of room for great adventures – including sports activities, interesting historical places, and nature. This map provides an overview of all the things to discover.

The area with its numerous different theme routes is ideal for cycling, water sports, climbing, hiking, horseback riding, golfing – or simply relaxing. 1000-year-old monasteries, castles, churches, mills and museums bear witness to the exciting history of the region and its people. The landscape varies from forests and the foothills of the low mountain range to fascinating moors, heathlands, inland dunes and vast water areas. Impressive experiences in nature are guaranteed!

The area surrounding the biggest lake in Lower Saxony, Lake Steinhuder Meer, includes parts of the Region Mittelweser, Schaumburger Land and the Nature Park Lake Steinhuder Meer. Each area has its own special charm, characterized by the unique landscapes and history.

Nature Park Lake Steinhuder Meer connects these areas and is a great example of nature protection and tourism going hand in hand. The 420 km² are characterized by vast high and lowland moors, swimming meadows, moraine landscapes, inland dunes, mountains and the heart of the nature park – Lake Steinhuder Meer. Flora and fauna in the nature park are just as diverse as the landscape. The unique natural paradise can be discovered on observation decks, adventure paths and sign-posted hike and bike paths, without disturbing these sensitive areas. A 32 kilometer long cycling track leads around Lake Steinhuder Meer. The shallow lake with its protected areas is a perfect breeding and resting place for wading birds and waterfowl, a true paradise for nature lovers. Observation platforms are ideal for bird watching and with a little bit of luck you might be able to see the majestic sea eagle. Thanks to comprehensive protection measures, rare species, such as the European mink and the moor duck, were reintroduced to this area.

Lake Steinhuder Meer is also a paradise for bathing beauties, swimmers, sailors and surfers. The promenades in Steinhuder Meer and Mardorf invite you to take a stroll and unwind, landing stages provide a maritime atmosphere and beautiful views.

The adjacent Neustädter Land in the north-east is a great place to spend time in nature. Several routes are well signposted and give you the opportunity to see many cultural treasures.

Nienburg is known as the city of half-timbered houses and Weserrenaissance city and is home to many interesting museums. It is the economic and cultural center in the Region Mittelweser. This region is directly connected to several popular bike routes, such as the Weser Bike Path and big tourist bike paths like the German Half-Timbered House Path, Lower Saxony's Asparagus Route, and Lower Saxony's Windmill Street. But before that, be sure to make a stop: How about a visit to Europe's most beautiful weekly market or Lower Saxony's Asparagus Museum?

The Cistercian Monastery Loccum, the Romantik Bad Rehburg and the Dinosaur Park in Münchhausen are well worth a detour.

Also, a boat trip on the river Weser is an unforgettable event. Characterized by its cultural and scenic diversity, the Schaumburger Land is a destination for adventurers. It is known for its numerous themed bike paths, hiking trails, pilgrim routes and small towns worth visiting. Bückeburg Castle is the splendid residence of the Princely Family of Schaumburg-Lippe. Stadthagen, known as the Weserrenaissance city, is famous for its unique ensemble of this magnificent architectural style. The museums in "Wilhelm Busch Country" Wiedensahl exhibit the humorous artworks of poet and illustrator Wilhelm Busch, creator of the famous pranksters "Max and Moritz". Guests are welcome to visit one of many events to experience the local traditions and hospitality.

Whether you take a suggested tour or an interesting side trip – let this map inspire you and start your individual adventure tour!

The employees in the tourist information centers and nature park information points are happy to help with planning your trip.

IMPRINT ADVENTURE MAP

Naturpark Steinhuder Meer
Ulferweg 18, 31535 Mardorf, Tel.: +49 511/616 26123

Editorial
Region Hannover, Team Kommunikation

Pictures
Titel: Inset Wilhelmstein, Fürstliche Hofkammer, Heiko Hoehn, Steinhuder Meer Tourismus GmbH
Introduction: Thomas Langender, Region Hannover, Steinhuder Meer Tourismus GmbH

Numbers 1 – 29
1 Mittelweser-Touristik GmbH | 2 Mittelweser-Touristik GmbH | 3 Mittelweser-Touristik GmbH | 4 Mittelweser-Touristik GmbH | 5 Mittelweser-Touristik GmbH | 6 Gemeinde Linsburg | 7 Carola Faber | 8 Thomas Langender, Mittelweser-Touristik GmbH | 9 Wilfried Rave | 10 Claus Kirsch | 11 Christine Kölling | 12 Christian Stark | 13 Christine Kölling | 14 Doreen Juffa and Christian Drahme | 15 Carola Faber | 16 Florian Toffel | 17 Wasserverband Nordschaumburg | 18 Florian Toffel | 19 Christian Wiegand | 20 Thomas Langender | 21 Niedersächsisches Staatsbad Nenndorf Betriebsgesellschaft mbH | 22 Christian Wynn, Schaumburger Land Tourismusmarketing e.V. | 23 Schaumburger Land Tourismusmarketing e.V. | 24 Mittelweser-Touristik GmbH | 25 Mittelweser-Touristik GmbH | 26 Steinhuder Meer Tourismus GmbH | 27 Claus Kirsch | 28 Fürstliche Hofkammer Bückeburg | 29 Schloss Bückeburg

Design
Region Hannover, Team Medien und Gestaltung

Map
Region Hannover, Team Medien und Gestaltung, Matthias Röller

Print
Bruns Druckwelt GmbH & Co. KG
Climate-neutral print on FSC recycled paper

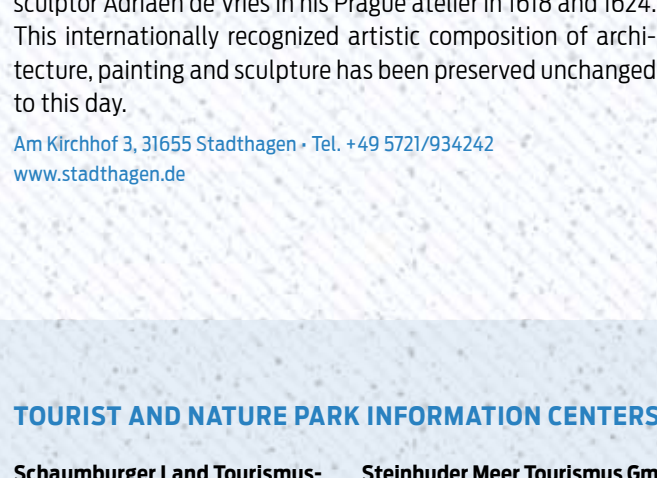
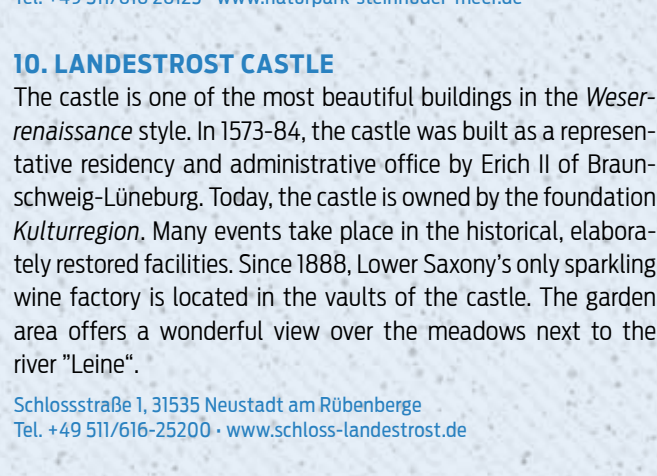
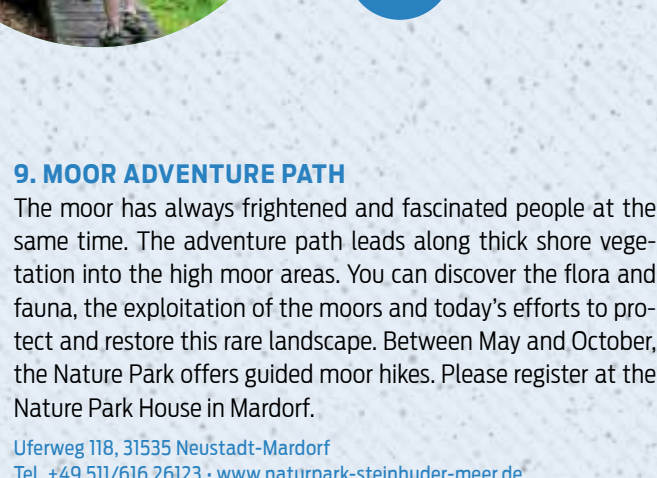
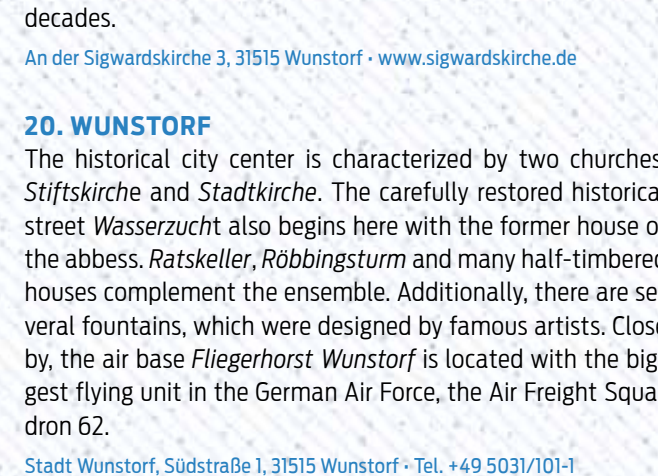
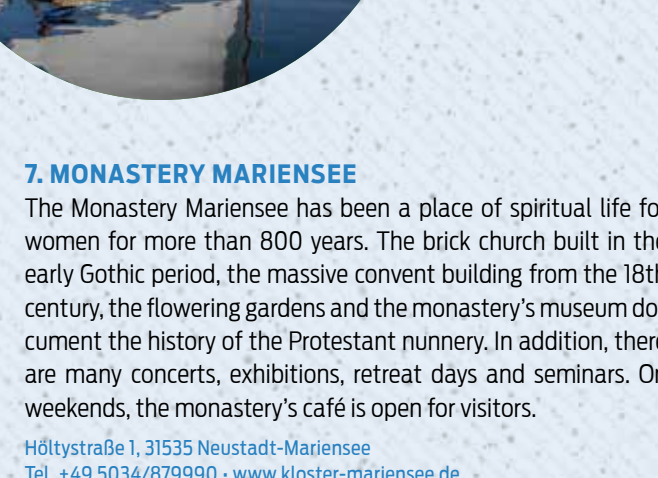
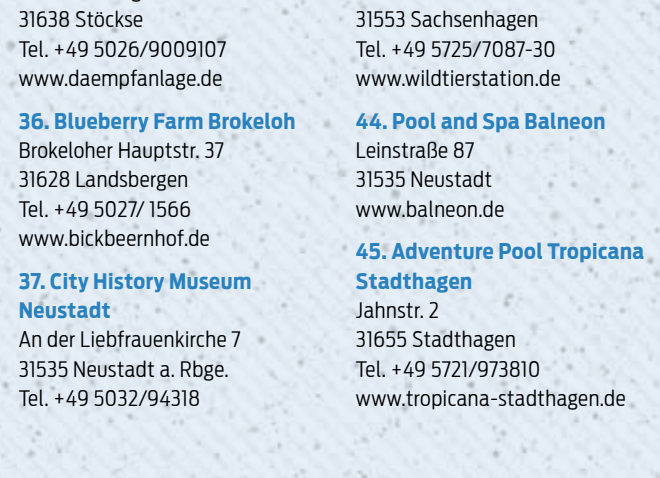
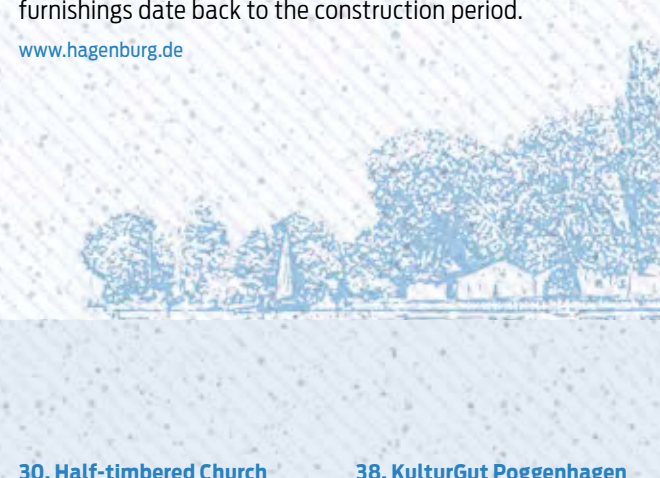
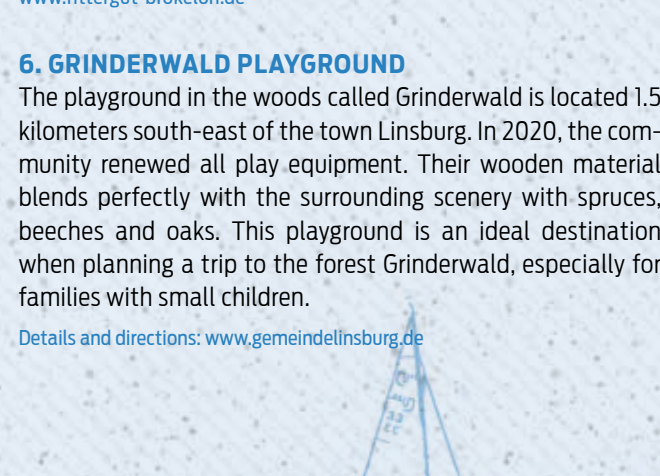
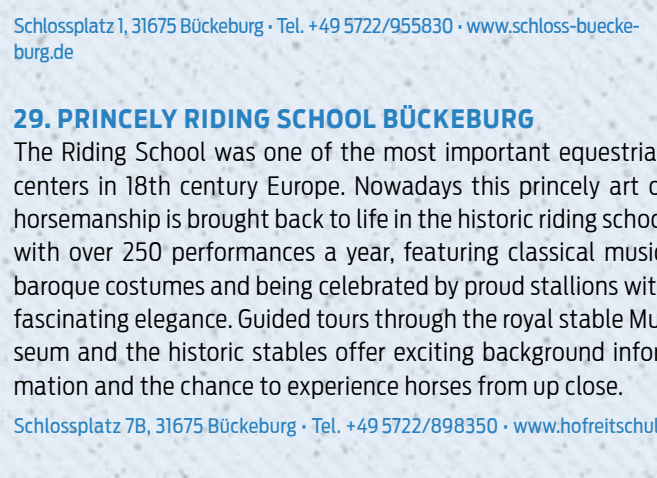
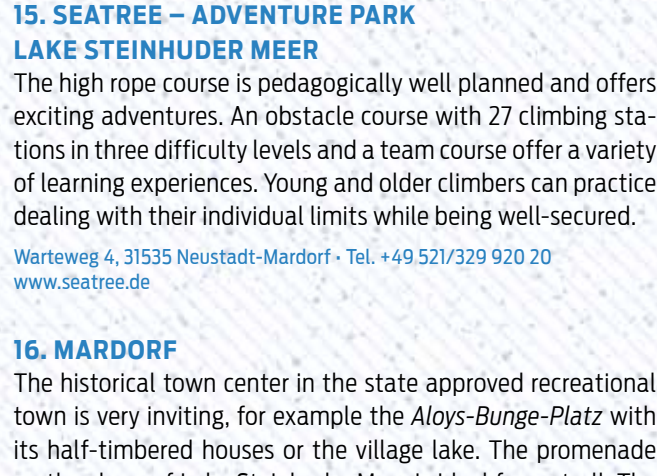
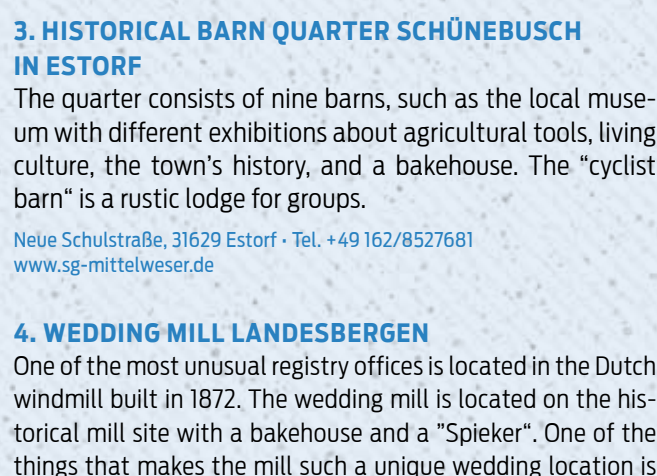
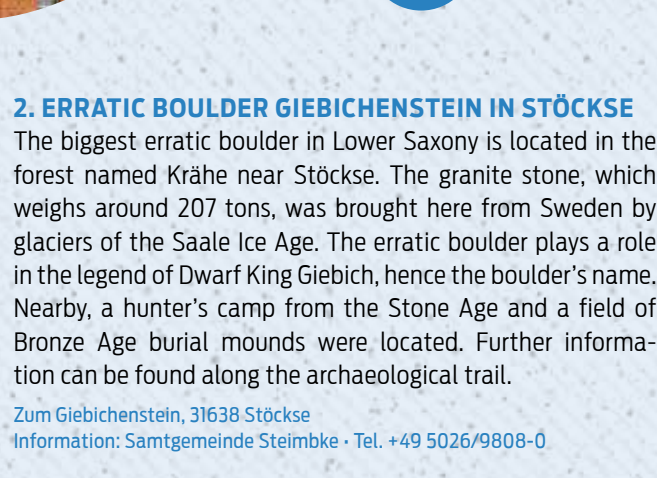
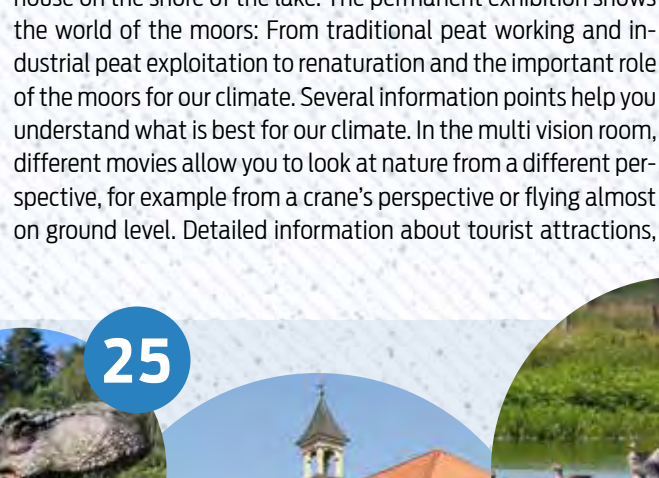
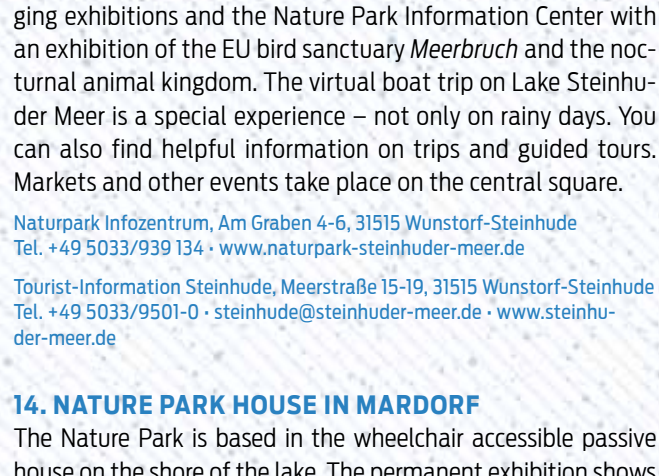
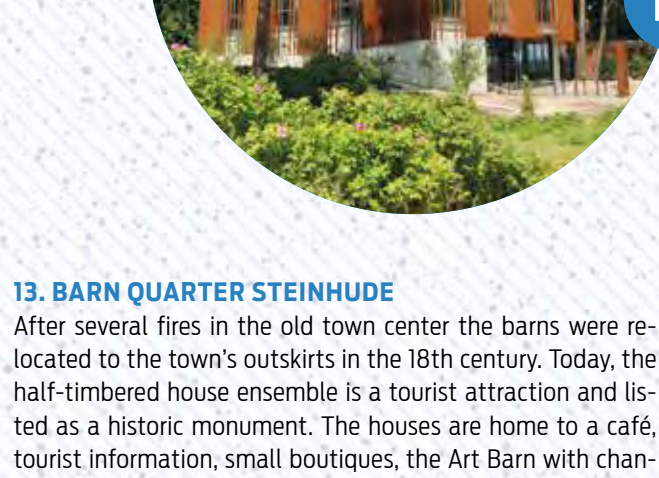
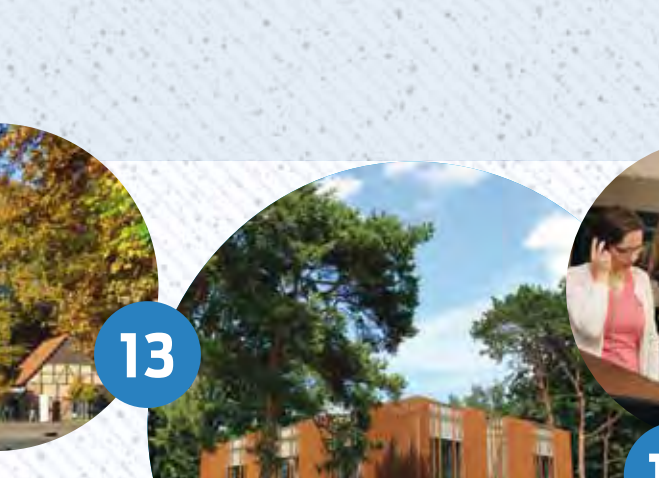
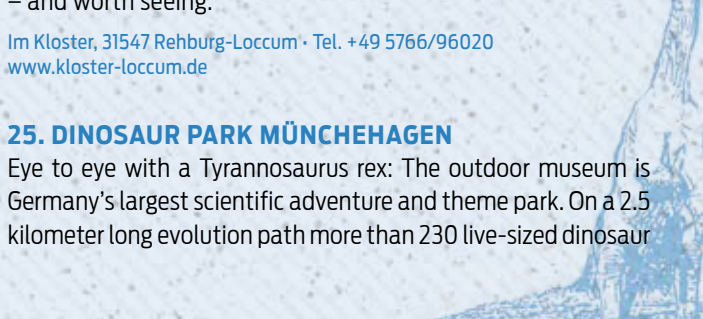
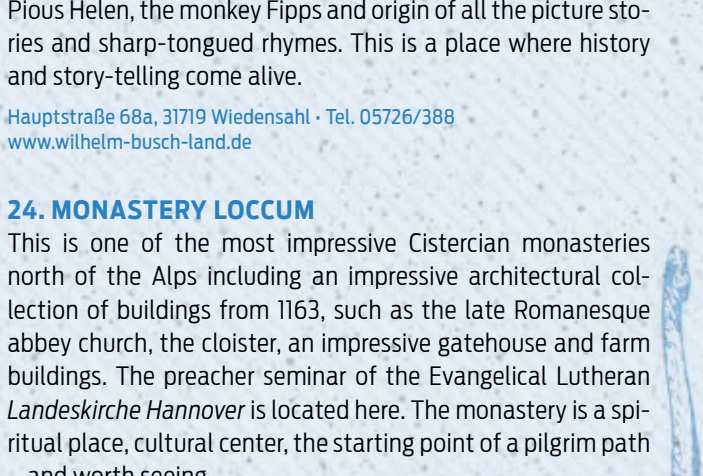
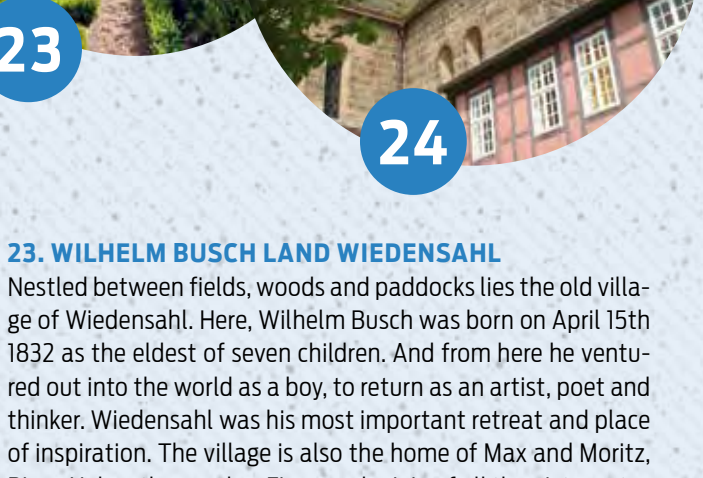
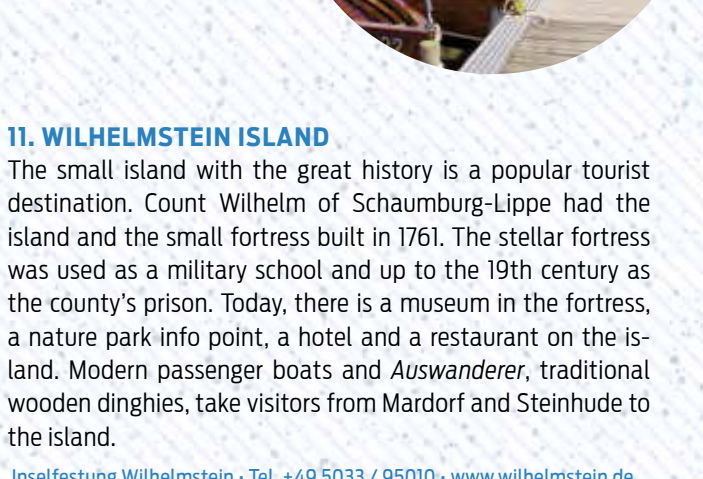
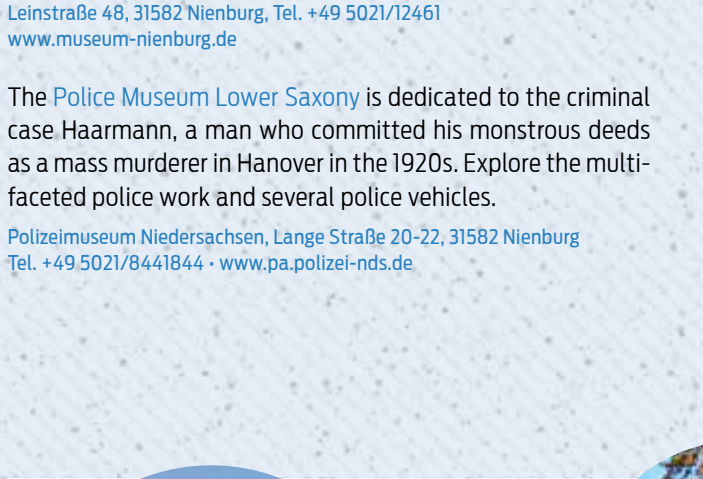
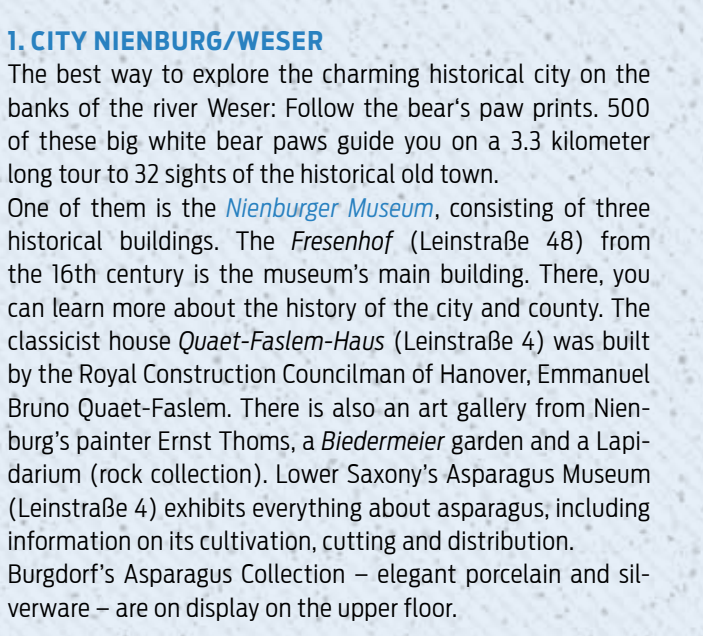
Klimaneutral
Druckprodukt
ClimatePartner.com



Edition
02/2023/01



ADVENTURE MAP

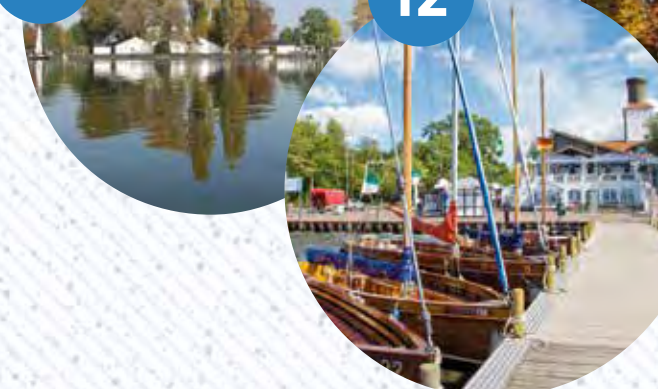


1. CITY NIENBURG/WESER

The best way to explore the charming historical city on the banks of the river Weser: Follow the bear's paw prints. 500 of these big white bear paw guides you on a 3.3 kilometer long tour to 32 sights of the historical old town. One of them is the **Nienburger Museum**, consisting of three historical buildings. The **Fresenhof** (Leinstraße 48) from the 16th century is the museum's main building. There, you can learn more about the history of the city and county. The classicist house **Quaet-Faslem-Haus** (Leinstraße 4) was built by the Royal Construction Councilman of Hanover, Emmanuel Bruno Quaet-Faslem. There is also an art gallery from Nienburger painter Ernst Thoms, a **Biedermeier** garden and a Lapidarium (rock collection). Lower Saxony's Asparagus Museum (Leinstraße 4) exhibits everything about asparagus, including information on its cultivation, cutting and distribution. Burgdorf's Asparagus Collection – elegant porcelain and silverware – are on display on the upper floor.
Leinstraße 48, 31582 Nienburg, Tel.: +49 5021/2461
www.museum-nienburg.de

The **Police Museum Lower Saxony** is dedicated to the criminal case Haarmann, a man who committed his monstrous deeds as a mass murderer in Hanover in the 1920s. Explore the multifaceted police work and several police vehicles.
Polizeimuseum Niedersachsen, Lange Straße 20-22, 31582 Nienburg, Tel.: +49 5021/644184
www.ppa.polizei-nds.de

The **Polze Museum Lower Saxony** is dedicated to the criminal case Haarmann, a man who committed his monstrous deeds as a mass murderer in Hanover in the 1920s. Explore the multifaceted police work and several police vehicles.
Polizeimuseum Niedersachsen, Lange Straße 20-22, 31582 Nienburg, Tel.: +49 5021/644184
www.ppa.polizei-nds.de



11. WILHELMSTEIN ISLAND

The small island with the great history is a popular tourist destination. Count Wilhelm of Schaumburg-Lippe had the island and the small fortress built in 1761. The stellar fortress was used as a military school and up to the 19th century as the county's prison. Today, there is a museum in the fortress, a nature park info point, a hotel and a restaurant on the island. Modern passenger boats and *Auswanderer*, traditional wooden dinghies, take visitors from Mardorf and Steinhuder Meer to the island.
Insellagerung Wilhelmstein - Tel.: +49 5033/95010
www.wilhelmstein.de

12. STEINHÜDER

Maritime flair prevails in the fishing village on the southern shore of Lake Steinhuder Meer. Fresh smoked eel is a popular local product in Steinhuder Meer. The museums exhibit the traditional life of fishermen and weavers. There, the unique seamless shirt can also be gazed at. An exotic experience is Steinhuder Meer's Insect Museum with its hundreds of colorful butterflies in the tropical hall. The promenade is the perfect place for a stroll overlooking the lake and Wilhelmstein Island. From here, the passenger boats and traditional wooden boats take visitors to the island and Mardorf. In addition, there are numerous events, such as the *Fischekredag* or the Festive Weekend with a spectacular firework display.
Tourist-Information Steinhuder Meer, Meerstraße 15-19, 31535 Wunstorf-Steinhuder Meer, Tel.: +49 5033/95010
www.steinhuder-meer.de



23. WILHELM BUSCH LAND WIEDENSAHL

Nestled between fields, woods and paddocks lies the old village of Wiedensahl. Here, Wilhelm Busch was born on April 15th 1832 as the eldest of seven children. And from here he ventured out into the world as a boy, to return as an artist, poet and thinker. Wiedensahl was his most important retreat and place of inspiration. The village is also the home of Max and Moritz, Floss Helen, the monkey Fipps and origin of all the picture stories and sharp-tongued rhymes. This is a place where history and story-telling come alive.
Hauptstraße 68a, 31719 Wiedensahl - Tel.: 05276/388
www.wilhelm-busch-land.de

24. MONASTERY LOCUM

This is one of the most impressive Cistercian monasteries north of the Alps including an impressive architectural collection of buildings from 1163, such as the late Romanesque abbey church, the cloister, an impressive gatehouse and farm buildings. The preacher seminar of the Evangelical Lutheran *Landeskirche Hannover* is located here. The monastery is a spiritual place, cultural center, the starting point of a pilgrim path – and worth seeing.
Im Kloster, 31547 Rehburg-Loccum - Tel.: +49 5786/96020
www.kloster-loccum.de

25. DINOSAUR PARK MÜNCHENHAGEN

Eye to eye with a Tyrannosaurus rex: The outdoor museum is Germany's largest scientific adventure and theme park. On a 2.5 kilometer long evolution path more than 230 live-sized dinosaur

2. ERRATIC BOULDER GIEBICHENSTEIN IN STÖCKE

The biggest erratic boulder in Lower Saxony is located in the forest named Krahe near Stöcke. The granite stone, which weighs around 207 tons, was brought here from Sweden by glaciers of the Saale Ice Age. The erratic boulder plays a role in the legend of Dwarf King Giebieh, hence the boulder's name. Nearby, a hunter's camp from the Stone Age and a field of Bronze Age burial mounds were located. Further information can be found along the archaeological trail.
Zum Giebiehstein, 31638 Stöcke
Information: Sämtgemeinde Steimbke - Tel.: +49 5026/9808-0

3. HISTORICAL BARN QUARTER SCHÜNEBUSCH IN ESTORF

The quarter consists of nine barns, such as the local museum with different exhibitions about agricultural tools, living culture, the town's history, and a bakehouse. The "cyclist barn" is a rustic lodge for groups.
Neue Schulstraße, 31629 Estorf - Tel.: +49 162/852781
www.sg-mittelweser.de

4. WEDDING MILL LANDESBERGE

One of the most unusual registry offices is located in the Dutch windmill built in 1872. The wedding mill is located on the historical mill site with a bakehouse and a "Spieker". One of the things that makes the mill such a unique wedding location is the wooden "Book of Brides". The newlyweds can write their names in the book an immortalize their union.
Mühlentplatz, 31628 Landesberge - Tel.: +49 5761/705421
www.sg-mittelweser.de



13. BARN QUARTER STEINHÜDER

After several fires in the old town center the barns were relocated to the town's outskirts in the 18th century. Today, the half-timbered house ensemble is a tourist attraction and listed as a historic monument. The houses are home to a café, tourist information, small boutiques, the Art Barn with changing exhibitions and the Nature Park Information Center with an exhibition of the EU bird sanctuary *Meerbruch* and the nocturnal animal kingdom. The virtual boat trip on Lake Steinhuder Meer is a special experience – not only on rainy days. You can also find helpful information on trips and guided tours. Markets and other events take place on the central square.
Naturpark Infozentrum, Am Graben 4-6, 31515 Wunstorf-Steinhuder Meer, Tel.: +49 5033/939 134
www.naturpark-steinhuder-meer.de
Tourist-Information Steinhuder Meer, Meerstraße 15-19, 31535 Wunstorf-Steinhuder Meer, Tel.: +49 5033/95010
www.steinhuder-meer.de

14. NATURE PARK HOUSE IN MARDORF

The Nature Park is based in the wheelchair accessible passive house on the shore of the lake. The permanent exhibition shows the world of the moors. From traditional peat working and industrial peat exploitation to renaturation and the important role of the moors for our climate. Several information points help you understand what is best for our climate. In the multi vision room, different movies allow you to look at nature from a different perspective, for example from a crane's perspective or flying almost on ground level. Detailed information about tourist attractions,



26. ROMANTIK BAD REHBURG

Bad Rehburg was once called "Madeira of the North" by its royal visitors. The historical resort facilities are a unique architectural and cultural monument dating back to the German Romanticism with a gallery, a bath house, a museum and the chapel *Friederikenkapelle*. The event calendar is also worth looking at. The program includes concerts, exhibitions, readings and jazz events. The vast park is the perfect place for a stroll while enjoying nature, just like the former kings and queens of Hannover once did.
Friedrich-Stobberg-Allee 4, 31547 Rehburg-Loccum/OT Bad Rehburg, Tel.: +49 5037/90006-0
www.romantik-bad-rehburg.de

27. WETLANDS MEERBRUCH

Low performances by frogs and large flocks of birds are common in the wetlands. Between the shallow ponds waters and waterfowl find ideal living conditions. In fall and spring thousands of migratory birds rest in the wetlands causing an impressive natural spectacle, which can best be observed from one of the observation towers. The wetlands are also the sea eagle's hunting grounds. The Ecological Protection Station

hiking trails, events and must sees can be found at the nature park and tourist information desk in the building.
Ulferweg 18, 31535 Neustadt-Mardorf
Tel.: +49 511/616 26123
www.naturpark-steinhuder-meer.de

15. SEATREE – ADVENTURE PARK LAKE STEINHÜDER MEER

The high rope course is pedagogically well planned and offers exciting adventures. An obstacle course with 27 climbing stations in three difficulty levels and a team course offer a variety of learning experiences. Young and older climbers can practice dealing with their individual limits while being well-secured.
Wartweg 4, 31535 Neustadt-Mardorf - Tel.: +49 521/329 920 20
www.seatree.de

16. MARDORF

The historical town center in the state approved recreational town is very inviting, for example the *Aloys-Bunge-Platz* with its half-timbered houses or the village lake. The promenade on the shore of Lake Steinhuder Meer is ideal for a stroll. The swim and surf beach is popular for its maritime atmosphere.
Tourist-Information Mardorf (Aloys-Bunge-Platz), Mardorfer Str. 8b, 31535 Neustadt-Mardorf - Tel.: +49 5036/92121
mardorf@steinhuder-meer.de
www.steinhuder-meer.de



28. CASTLE BÜCKEBURG EXPERIENCE

Take a journey through seven centuries with a guided tour offering unforgettable impressions of historical splendour and courtly life. Designed in the style of English landscapes, the Schlosspark (castle park) with its stately tree population is also the location of the burial place for the Princely House of Schaumburg-Lippe. The golden mosaic with its expanse of 500 square meters in the dome of the mausoleum near the garden's edge is the largest in Europe.
Schlossplatz 3, 31675 Bückeburg - Tel.: +49 5722/95830
www.schloss-bueckeburg.de

29. PRINCELY RIDING SCHOOL BÜCKEBURG

The Riding School was one of the most important equestrian centers in 18th century Europe. Nowadays this princely art of horsemanship is brought back to life in the historic riding school with over 250 performances a year, featuring classical music, baroque costumes and being celebrated by proud stallions with fascinating elegance. Guided tours through the royal stable Museum and the historic stables offer exciting background information and the chance to experience horses from up close.
Schlossplatz 78, 31675 Bückeburg - Tel.: +49 5722/898350
www.hofreitschule

17. WATER AND MORE – ADVENTURE PARK

Here, the topic is water. In the areas "thirsty for knowledge", "for all senses" and "for your health" the playful and educational experiments give you an understanding of the wet element – it is fun for all generations.
Ander Trift, 31515 Wunstorf-Steinhuder Meer - Tel.: +49 5725/9413-0
www.wasser-nordschaumburg.de

18. FORMER ROYAL HOME: HAGENBURG

This tour has 20 stops and interesting destinations, such as the castle, the former summer residence for the House of Schaumburg-Lippe. The driveway is lined with rhododendrons, which turn the road into a pink and purple blaze of colour when they are in flower. On Hagenburg's nature trail in the moor garden, the moor landscape with its unique flora and fauna can be explored. In the boulder garden, the 23 huge geological natural monuments bear witness to the Ice Age. The church St. Nicolai with its west tower and panoramic view over Lake Steinhuder Meer can be seen from afar. The neo-Gothic hall today is a masterpiece by Conrad Wilhelm Hase from Hanover. Hagenburg's furnishings date back to the construction period.
www.hagenburg.de

30. Half-timbered Church Estorf

Am der Kirche 1
31629 Estorf
Tel.: +49 5025/265
www.kirchenkreis-nienburg.de

31. Wesavi Nienburg

Mindener Landstraße 22 a
31582 Nienburg
Tel.: +49 5021/81-500
www.wesavi-nienburg.de

32. German Creative Wood Center

Bürgermeister-Stahn-Wall 37
31582 Nienburg
Tel.: +49 5021/8660511
www.dkholz.de

33. Pristine Teaching and Show Garden BUND Nienburg

Ziegelkampstr.7
Ecke Meerbachbrücke
31582 Nienburg
Tel.: +49 5021/41499
www.bund-nienburg.de

34. Open-Air Stage Stöcke

Nienburger Str. 16
31638 Stöcke
Tel.: +49 5026/1399 or 8569
www.freilichtspiele-stoecke.de

35. Potaroo Steamer Stöcke

Zum Heideberg 9
31638 Stöcke
Tel.: +49 5026/9009107
www.daemplanlage.de

36. KulturGut Poggenhagen

Gut Poggenhagen 4
31535 Neustadt-Poggenhagen
Tel.: +49 5032/919940
www.kulturgut-poggenhagen.de

39. JU 52 Hangar Wunstorf

Am Fliegerhorst
31515 Wunstorf
Tel.: +49 5041/81428
www.kapellierleue.de

40. Pirate's Bay, Adventure Golf

Lützen Hagen 8
31558 Hagenburg
Tel.: +49 174/281815
www.platenbucht-hagenburg.de

41. Wildlife-Manufactory Kapellenhöhe

Auf der Heide 32
31556 Wiedenbrügge
Tel.: +49 5037/00399
www.kapellierleue.de

42. Ecological Protection Station Steinhuder Meer (OSSM)

Hagenburger Str. 16
31547 Rehburg-Loccum
Tel.: +49 5725/70188
www.gut-remeringhausen.de

46. Castle Stadthagen

Info: Tourist-Info
Am Markt 1
31655 Stadthagen
Tel.: +49 5721/925065
www.stadthagen.de

47. Dinosaur Footprints Bückeburg

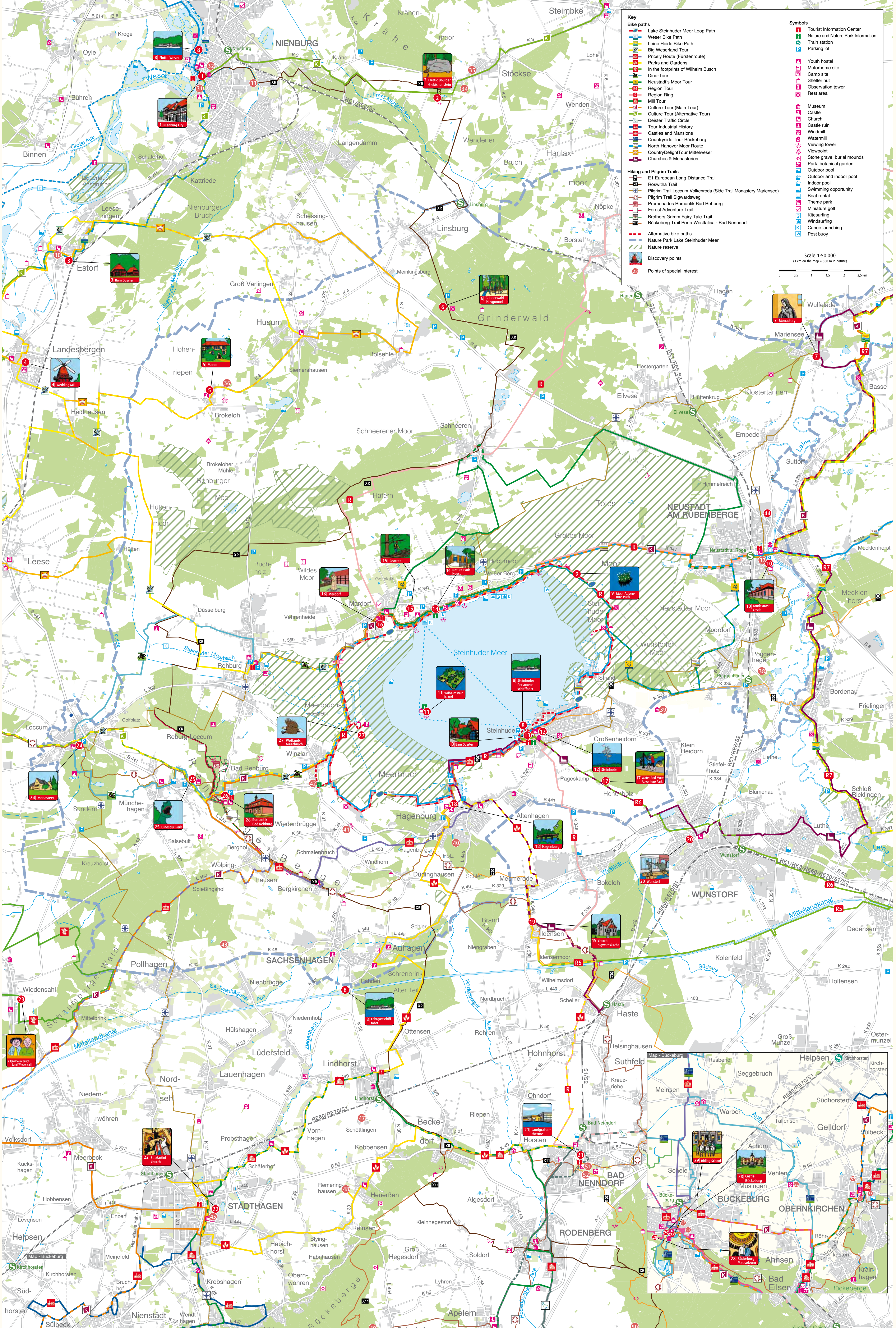
Info: Schaumburger Land
Tourismmarketing e.V.
Lange Str. 45
31675 Bückeburg
Tel.: +49 5722/890550
www.schaumburgerland-tourismus.de

48. Distillery Schöttingen

Schöttingen 1
31698 Lindhorst
Tel.: +49 5722/319867
Production Tour
Heuener Str. 25
31655 Stadthagen
Tel.: +49 5724/397726
www.oberkirchen-inf.de

50. Wood Apalry Schaumburg

Zum Forsthaus 21
31552 Apeln/Reinsdorf
Tel.: +49 5043/40176
www.gut-remeringhausen.de



Key

- Bike paths**
 - Lake Steinhuder Meer Loop Path
 - Weser Bike Path
 - Leine Heide Bike Path
 - Big Weserland Tour
 - Pricely Route (Fürstenroute)
 - Parks and Gardens
 - In the footsteps of Wilhelm Busch
 - Dino-Tour
 - Neustadt's Moor Tour
 - Region Tour
 - Region Ring
 - Mill Tour
 - Culture Tour (Main Tour)
 - Culture Tour (Alternative Tour)
 - Deister Traffic Circle
 - Tour Industrial History
 - Castles and Mansions
 - Countryside Tour Bückeburg
 - North-Hanover Moor Route
 - CountryDelightTour Mittelweser
 - Churches & Monasteries
- Hiking and Pilgrim Trails**
 - E1 European Long-Distance Trail
 - Roswitha Trail
 - Pilgrim Trail Loccum-Volkenroda (Side Trail Monastery Mariensee)
 - Pilgrim Trail Sigwardsweg
 - Promenades Romantik Bad Rehburg
 - Forest Adventure Trail
 - Brothers Grimm Fairy Tale Trail
 - Bückeberg Trail Porta Westfalica - Bad Nenndorf
- Alternative bike paths**
 - Nature Park Lake Steinhuder Meer
 - Nature reserve
- Discovery points**
- Points of special interest**

Symbols

- Tourist Information Center
- Nature and Nature Park Information
- Train station
- Parking lot
- Youth hostel
- Motorhome site
- Camp site
- Shelter hut
- Observation tower
- Rest area
- Museum
- Castle
- Church
- Castle ruin
- Windmill
- Watermill
- Viewing tower
- Viewpoint
- Stone grave, burial mounds
- Park, botanical garden
- Outdoor pool
- Outdoor and indoor pool
- Indoor pool
- Swimming opportunity
- Boat rental
- Theme park
- Miniature golf
- Kitesurfing
- Windsurfing
- Canoe launching
- Post buoy

Scale 1:50,000
(1 cm on the map = 500 m in nature)

0 0.5 1 1.5 2 2.5 km

NIEBURG
Stöckse
Wenden
Wendener
Bruch
Hanlax
moor
Nöpke
Borstel

Estorf
Groß Varlingen
Husum
Schemmerhausen
Bolschle
Grinderwald

Landesbergen
Heidhausen
Rehburger
Hüttenmoor
Leese

Rehburg
Wiedenburg
Vehnenheide
Mardorf

Rehburg
Wiedenburg
Vehnenheide
Mardorf

Rehburg
Wiedenburg
Vehnenheide
Mardorf

Rehburg
Wiedenburg
Vehnenheide
Mardorf

Rehburg
Wiedenburg
Vehnenheide
Mardorf

Rehburg
Wiedenburg
Vehnenheide
Mardorf

Rehburg
Wiedenburg
Vehnenheide
Mardorf

Linsburg
Meinkingsburg
Hagen
Hestergarten
Eilvese
Hüttenkrug
Klosterstann
Empede

Linsburg
Meinkingsburg
Hagen
Hestergarten
Eilvese
Hüttenkrug
Klosterstann
Empede

Linsburg
Meinkingsburg
Hagen
Hestergarten
Eilvese
Hüttenkrug
Klosterstann
Empede

Linsburg
Meinkingsburg
Hagen
Hestergarten
Eilvese
Hüttenkrug
Klosterstann
Empede

Linsburg
Meinkingsburg
Hagen
Hestergarten
Eilvese
Hüttenkrug
Klosterstann
Empede

Linsburg
Meinkingsburg
Hagen
Hestergarten
Eilvese
Hüttenkrug
Klosterstann
Empede

Linsburg
Meinkingsburg
Hagen
Hestergarten
Eilvese
Hüttenkrug
Klosterstann
Empede

Linsburg
Meinkingsburg
Hagen
Hestergarten
Eilvese
Hüttenkrug
Klosterstann
Empede

Linsburg
Meinkingsburg
Hagen
Hestergarten
Eilvese
Hüttenkrug
Klosterstann
Empede

Linsburg
Meinkingsburg
Hagen
Hestergarten
Eilvese
Hüttenkrug
Klosterstann
Empede

Wulfelade
Mariensee
Basse
Mecklenhorst
Mecklenhorst
Frielingen
Schloß Ricklingen
Luthe

Wulfelade
Mariensee
Basse
Mecklenhorst
Mecklenhorst
Frielingen
Schloß Ricklingen
Luthe

Wulfelade
Mariensee
Basse
Mecklenhorst
Mecklenhorst
Frielingen
Schloß Ricklingen
Luthe

Wulfelade
Mariensee
Basse
Mecklenhorst
Mecklenhorst
Frielingen
Schloß Ricklingen
Luthe

Wulfelade
Mariensee
Basse
Mecklenhorst
Mecklenhorst
Frielingen
Schloß Ricklingen
Luthe

Wulfelade
Mariensee
Basse
Mecklenhorst
Mecklenhorst
Frielingen
Schloß Ricklingen
Luthe

Wulfelade
Mariensee
Basse
Mecklenhorst
Mecklenhorst
Frielingen
Schloß Ricklingen
Luthe

Wulfelade
Mariensee
Basse
Mecklenhorst
Mecklenhorst
Frielingen
Schloß Ricklingen
Luthe

Wulfelade
Mariensee
Basse
Mecklenhorst
Mecklenhorst
Frielingen
Schloß Ricklingen
Luthe

Wulfelade
Mariensee
Basse
Mecklenhorst
Mecklenhorst
Frielingen
Schloß Ricklingen
Luthe

NEUSTADT AM RUBEENBERGE
Himmelsreich
Großes Moor
Wunstorfer Moor
Poggenhagen
Bordenau
Frielingen

NEUSTADT AM RUBEENBERGE
Himmelsreich
Großes Moor
Wunstorfer Moor
Poggenhagen
Bordenau
Frielingen

NEUSTADT AM RUBEENBERGE
Himmelsreich
Großes Moor
Wunstorfer Moor
Poggenhagen
Bordenau
Frielingen

NEUSTADT AM RUBEENBERGE
Himmelsreich
Großes Moor
Wunstorfer Moor
Poggenhagen
Bordenau
Frielingen

NEUSTADT AM RUBEENBERGE
Himmelsreich
Großes Moor
Wunstorfer Moor
Poggenhagen
Bordenau
Frielingen

NEUSTADT AM RUBEENBERGE
Himmelsreich
Großes Moor
Wunstorfer Moor
Poggenhagen
Bordenau
Frielingen

NEUSTADT AM RUBEENBERGE
Himmelsreich
Großes Moor
Wunstorfer Moor
Poggenhagen
Bordenau
Frielingen

NEUSTADT AM RUBEENBERGE
Himmelsreich
Großes Moor
Wunstorfer Moor
Poggenhagen
Bordenau
Frielingen

NEUSTADT AM RUBEENBERGE
Himmelsreich
Großes Moor
Wunstorfer Moor
Poggenhagen
Bordenau
Frielingen

NEUSTADT AM RUBEENBERGE
Himmelsreich
Großes Moor
Wunstorfer Moor
Poggenhagen
Bordenau
Frielingen

SACHSENHAGEN
Wiedenburg
Vehnenheide
Mardorf
Hagenburg
Altenhagen
Idensen
Haste

SACHSENHAGEN
Wiedenburg
Vehnenheide
Mardorf
Hagenburg
Altenhagen
Idensen
Haste

SACHSENHAGEN
Wiedenburg
Vehnenheide
Mardorf
Hagenburg
Altenhagen
Idensen
Haste

SACHSENHAGEN
Wiedenburg
Vehnenheide
Mardorf
Hagenburg
Altenhagen
Idensen
Haste

SACHSENHAGEN
Wiedenburg
Vehnenheide
Mardorf
Hagenburg
Altenhagen
Idensen
Haste

SACHSENHAGEN
Wiedenburg
Vehnenheide
Mardorf
Hagenburg
Altenhagen
Idensen
Haste

SACHSENHAGEN
Wiedenburg
Vehnenheide
Mardorf
Hagenburg
Altenhagen
Idensen
Haste

SACHSENHAGEN
Wiedenburg
Vehnenheide
Mardorf
Hagenburg
Altenhagen
Idensen
Haste

SACHSENHAGEN
Wiedenburg
Vehnenheide
Mardorf
Hagenburg
Altenhagen
Idensen
Haste

SACHSENHAGEN
Wiedenburg
Vehnenheide
Mardorf
Hagenburg
Altenhagen
Idensen
Haste

STADTHAGEN
Vornhagen
Schöttingen
Kobbensen
Heuerßen
Reinsen
Kleinhegestorf

STADTHAGEN
Vornhagen
Schöttingen
Kobbensen
Heuerßen
Reinsen
Kleinhegestorf

STADTHAGEN
Vornhagen
Schöttingen
Kobbensen
Heuerßen
Reinsen
Kleinhegestorf

STADTHAGEN
Vornhagen
Schöttingen
Kobbensen
Heuerßen
Reinsen
Kleinhegestorf

STADTHAGEN
Vornhagen
Schöttingen
Kobbensen
Heuerßen
Reinsen
Kleinhegestorf

STADTHAGEN
Vornhagen
Schöttingen
Kobbensen
Heuerßen
Reinsen
Kleinhegestorf

STADTHAGEN
Vornhagen
Schöttingen
Kobbensen
Heuerßen
Reinsen
Kleinhegestorf

STADTHAGEN
Vornhagen
Schöttingen
Kobbensen
Heuerßen
Reinsen
Kleinhegestorf

STADTHAGEN
Vornhagen
Schöttingen
Kobbensen
Heuerßen
Reinsen
Kleinhegestorf

STADTHAGEN
Vornhagen
Schöttingen
Kobbensen
Heuerßen
Reinsen
Kleinhegestorf

RODENBERG
Suthfeld
Helsinghausen
Kreuzriehe
Meinsen
Seggebruch
Sühorsten
Geldorf
Sülbeck

RODENBERG
Suthfeld
Helsinghausen
Kreuzriehe
Meinsen
Seggebruch
Sühorsten
Geldorf
Sülbeck

RODENBERG
Suthfeld
Helsinghausen
Kreuzriehe
Meinsen
Seggebruch
Sühorsten
Geldorf
Sülbeck

RODENBERG
Suthfeld
Helsinghausen
Kreuzriehe
Meinsen
Seggebruch
Sühorsten
Geldorf
Sülbeck

RODENBERG
Suthfeld
Helsinghausen
Kreuzriehe
Meinsen
Seggebruch
Sühorsten
Geldorf
Sülbeck

RODENBERG
Suthfeld
Helsinghausen
Kreuzriehe
Meinsen
Seggebruch
Sühorsten
Geldorf
Sülbeck

RODENBERG
Suthfeld
Helsinghausen
Kreuzriehe
Meinsen
Seggebruch
Sühorsten
Geldorf
Sülbeck

RODENBERG
Suthfeld
Helsinghausen
Kreuzriehe
Meinsen
Seggebruch
Sühorsten
Geldorf
Sülbeck

RODENBERG
Suthfeld
Helsinghausen
Kreuzriehe
Meinsen
Seggebruch
Sühorsten
Geldorf
Sülbeck

RODENBERG
Suthfeld
Helsinghausen
Kreuzriehe
Meinsen
Seggebruch
Sühorsten
Geldorf
Sülbeck

BAD NENNDORF
Algesdorf
Söldorf
Apelern

BAD NENNDORF
Algesdorf
Söldorf
Apelern

BAD NENNDORF
Algesdorf
Söldorf
Apelern

BAD NENNDORF
Algesdorf
Söldorf
Apelern

BAD NENNDORF
Algesdorf
Söldorf
Apelern

BAD NENNDORF
Algesdorf
Söldorf
Apelern

BAD NENNDORF
Algesdorf
Söldorf
Apelern

BAD NENNDORF
Algesdorf
Söldorf
Apelern

BAD NENNDORF
Algesdorf
Söldorf
Apelern

BAD NENNDORF
Algesdorf
Söldorf
Apelern

BAD NENNDORF
Algesdorf
Söldorf
Apelern

BAD NENNDORF
Algesdorf
Söldorf
Apelern

BAD NENNDORF
Algesdorf
Söldorf
Apelern

BAD NENNDORF
Algesdorf
Söldorf
Apelern

BAD NENNDORF
Algesdorf
Söldorf
Apelern

BAD NENNDORF
Algesdorf
Söldorf
Apelern

BAD NENNDORF
Algesdorf
Söldorf
Apelern

BAD NENNDORF
Algesdorf
Söldorf
Apelern

BAD NENNDORF
Algesdorf
Söldorf
Apelern

BAD NENNDORF
Algesdorf
Söldorf
Apelern

BAD NENNDORF
Algesdorf
Söldorf
Apelern

BAD NENNDORF
Algesdorf
Söldorf
Apelern

BAD NENNDORF
Algesdorf
Söldorf
Apelern

BAD NENNDORF
Algesdorf
Söldorf
Apelern

BAD NENNDORF
Algesdorf
Söldorf
Apelern

BAD NENNDORF
Algesdorf
Söldorf
Apelern

BAD NENNDORF
Algesdorf
Söldorf
Apelern

BAD NENNDORF
Algesdorf
Söldorf
Apelern

BAD NENNDORF
Algesdorf
Söldorf
Apelern

BAD NENNDORF
Algesdorf
Söldorf
Apelern

BAD NENNDORF
Algesdorf
Söldorf
Apelern

BAD NENNDORF
Algesdorf
Söldorf
Apelern

BAD NENNDORF
Algesdorf
Söldorf
Apelern

BAD NENNDORF
Algesdorf
Söldorf
Apelern

BAD NENNDORF
Algesdorf
Söldorf
Apelern

BAD NENNDORF
Algesdorf
Söldorf
Apelern

BAD NENNDORF
Algesdorf
Söldorf
Apelern

BAD NENNDORF
Algesdorf
Söldorf
Apelern

BAD NENNDORF
Algesdorf
Söldorf
Apelern

BAD NENNDORF
Algesdorf
Söldorf
Apelern

BAD NENNDORF
Algesdorf
Söldorf
Apelern

BAD NENNDORF
Algesdorf
Söldorf
Apelern

BAD NENNDORF
Algesdorf
Söldorf
Apelern

BAD NENNDORF
Algesdorf
Söldorf
Apelern

BAD NENNDORF
Algesdorf
Söldorf
Apelern

BAD NENNDORF
Algesdorf
Söldorf
Apelern

BAD NENNDORF
Algesdorf
Söldorf
Apelern

BAD NENNDORF
Algesdorf
Söldorf
Apelern

BAD NENNDORF
Algesdorf
Söldorf
Apelern

BAD NENNDORF
Algesdorf
Söldorf
Apelern

BAD NENNDORF
Algesdorf
Söldorf
Apelern

BAD NENNDORF
Algesdorf
Söldorf
Apelern

BAD NENNDORF
Algesdorf
Söldorf
Apelern

BAD NENNDORF
Algesdorf
Söldorf
Apelern

BAD NENNDORF
Algesdorf
Söldorf
Apelern

BAD NENNDORF
Algesdorf
Söldorf
Apelern

BAD NENNDORF
Algesdorf
Söldorf
Apelern

BAD NENNDORF
Algesdorf
Söldorf
Apelern

BAD NENNDORF
Algesdorf
Söldorf
Apelern

BAD NENNDORF
Algesdorf
Söldorf
Apelern